

JESCO®

Since 1932

MACHINE GUARD INSTALLATION INSTRUCTIONS

NOTE:

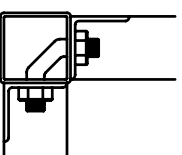
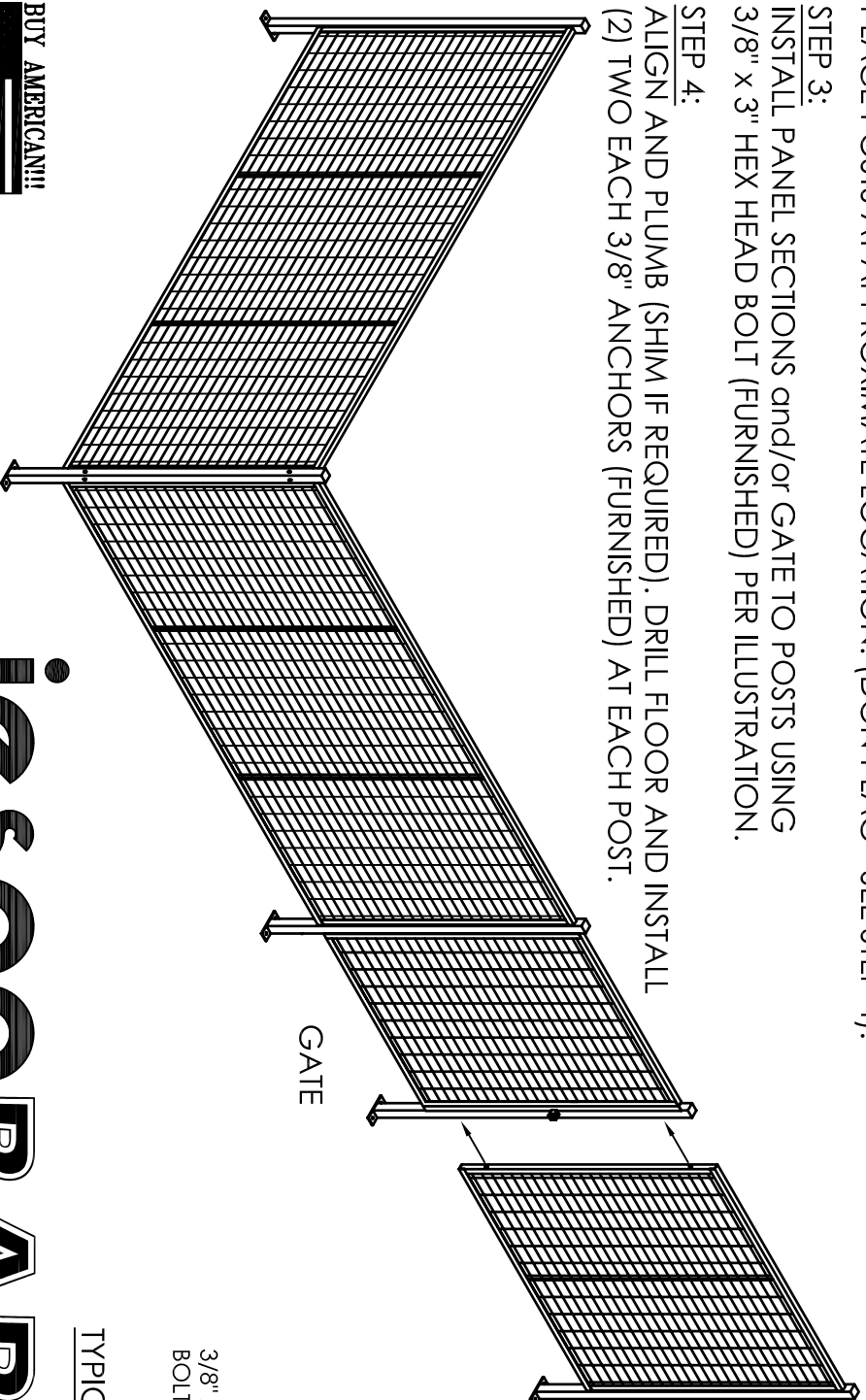
MACHINE GUARDS ARE DESIGNED FOR INSTALLATION ON LEVEL CONCRETE FLOOR ONLY. IF FLOOR IS NOT LEVEL SHIMS WILL BE REQUIRED.

STEP 1:
LAYOUT AREA IN WHICH MACHINE GUARDS ARE TO BE INSTALLED.

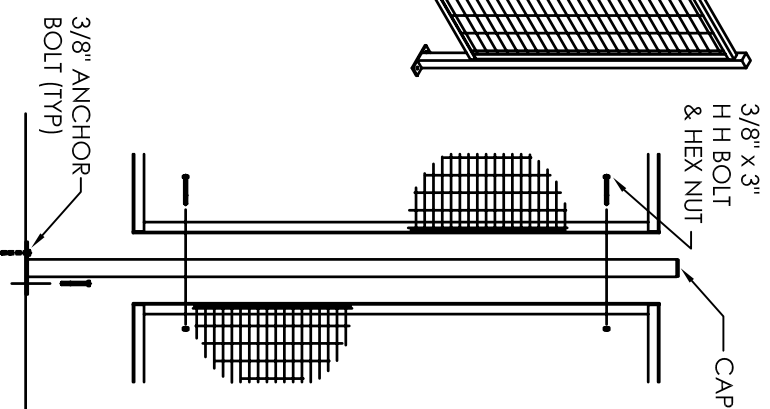
STEP 2:
PLACE POSTS AT APPROXIMATE LOCATION. (DON'T LAG - SEE STEP 4).

STEP 3:
INSTALL PANEL SECTIONS and/or GATE TO POSTS USING 3/8" x 3" HEX HEAD BOLT (FURNISHED) PER ILLUSTRATION.

STEP 4:
ALIGN AND PLUMB (SHIM IF REQUIRED). DRILL FLOOR AND INSTALL (2) TWO EACH 3/8" ANCHORS (FURNISHED) AT EACH POST.



TYPICAL CORNER CONNECTION



TYPICAL SECTION @ POST



JESCO BARRIER®

Jesco Industries, Inc. - P.O. Box 388 - 950 Anderson Rd. - Litchfield, MI 49252-0388

Telephone: 1.517.542.2903

Fax It: 1.517.542.2501

E-MAIL: Jesco@jescoonline.com

Web Site: www.jescoOnline.com