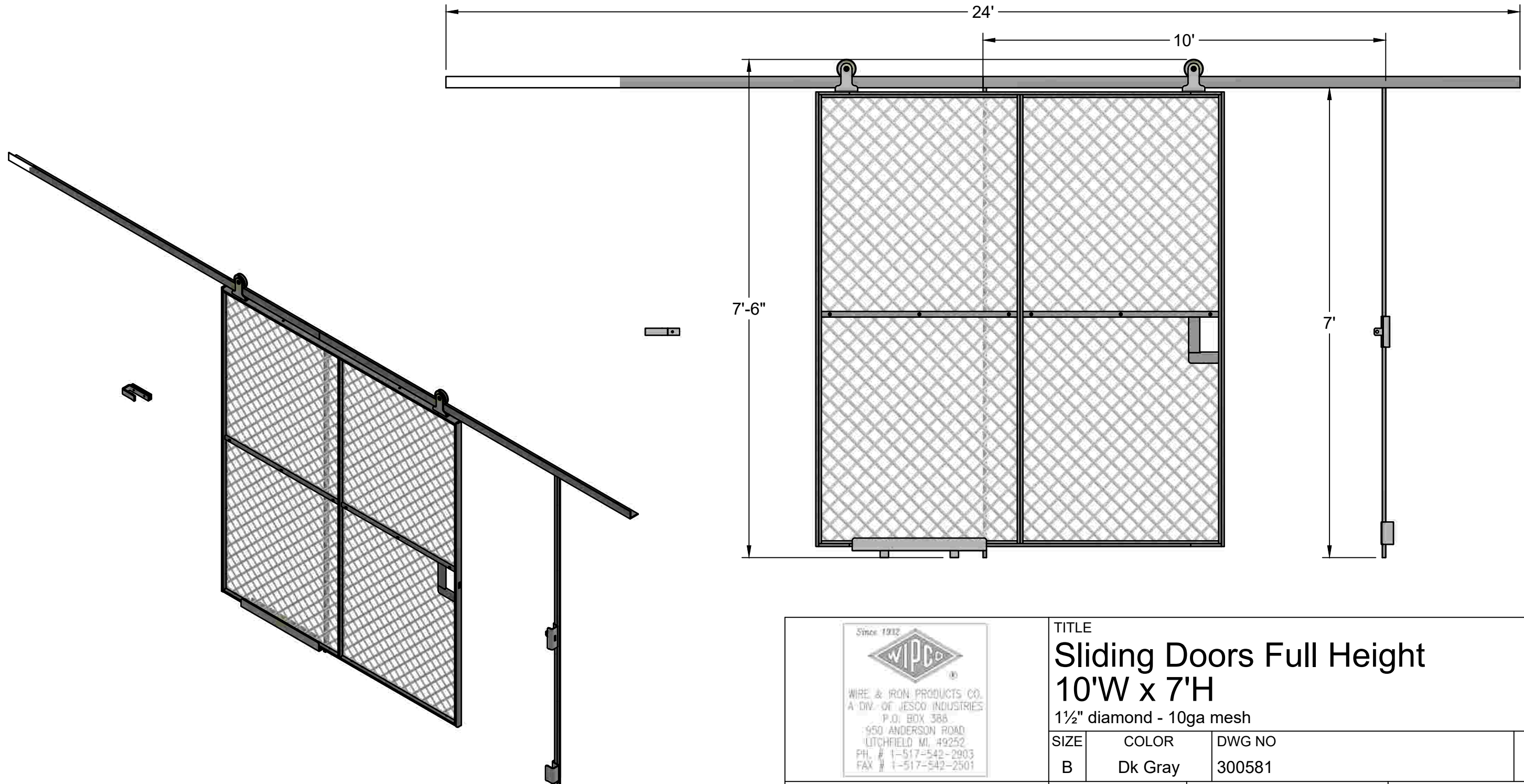


**FIRST PART
APPROVAL REQUIRED**
 APPROVED BY _____
 DATE _____



Since 1932

 WIRE & IRON PRODUCTS CO.
 A DIV. OF JESCO INDUSTRIES
 P.O. BOX 388
 950 ANDERSON ROAD
 LITCHFIELD MI, 49252
 PH. # 1-517-542-2903
 FAX # 1-517-542-2501

TITLE			
Sliding Doors Full Height			
10'W x 7'H			
1½" diamond - 10ga mesh			
SIZE	COLOR	DWG NO	REV
B	Dk Gray	300581	