

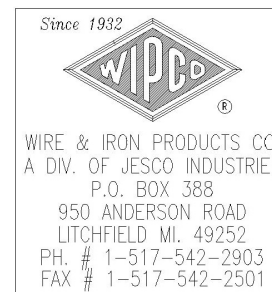
**FIRST PART
APPROVAL REQUIRED**

APPROVED BY _____

DATE _____

**Specifications
2 x 1 - 10ga. Standard Duty**

- Line Post: 2" square tube with 3/8" x 3" x 7" base plate, includes two (2) holes for 3/8" anchors
- Sweep Space: 3/4"
- Hardware: Zinc plated. All necessary interconnecting hardware for installation furnished. Wall and floor anchors optional.
- Finish: Shop coat of Dark Gray PM9017.
The paint finish specified is for interior use only.
Material must be stored inside in a dry well ventilated area.
Do not store outside exposed to the elements.



TITLE
**Line Post @ 8'-5 1/4" w/cap included
for 8' mesh**

SIZE	COLOR	DWG NO	REV
B	Dark Gray	392011	