

SIZE AND QUANTITY REQUIRED			
ITEM #	DESCRIPTION	WIDTH	X HEIGHT QTY
PHH0804	PANEL	8	X 4 1
PHH0404	SIDE PANEL	4	X 4 2
X3078	4' X 4' DOOR ASSY		4 2
X3081	8' DOOR TRACK ASSY BOTTOM		1
X3082	8' DOOR TRACK ASSY TOP		1
X3085	4' KNEE BRACE ASSY - LH		1
X3086	4' KNEE BRACE ASSY - RH		1
X3089	4' FRONT CORNER ANGLE - LH		1
X3090	4' FRONT CORNER ANGLE - RH		1
X3092	4' CENTER BRACE ASSY		1
X3094	4' CEILING ANGLE		2
BP005	PANEL BOLT PKG.		3
BP075	BOLT PKG. FOR STORAGE LOCKER SIDES		3

\*384200 CEILING OPTION\*

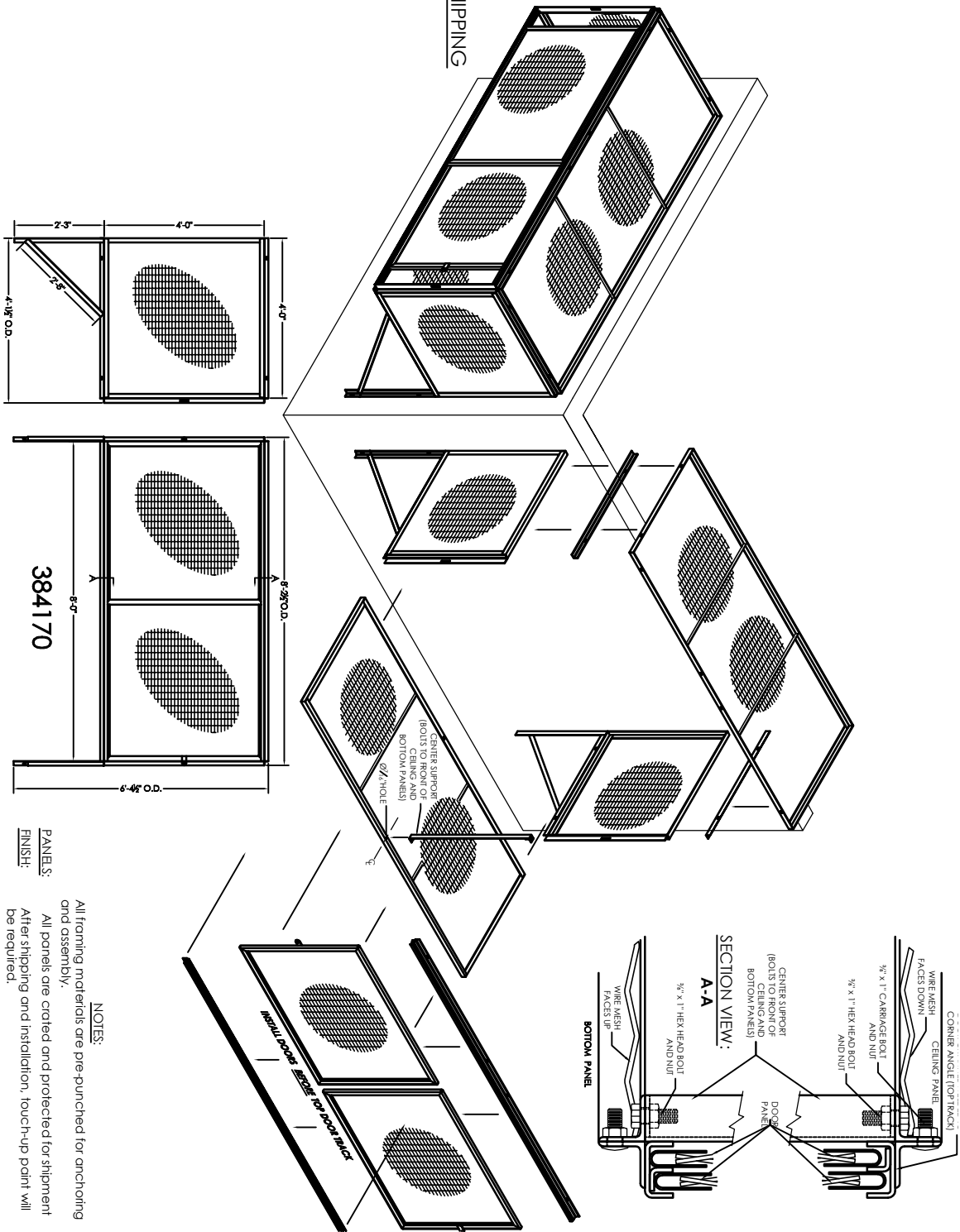
SIZE AND QUANTITY REQUIRED			
ITEM #	DESCRIPTION	WIDTH	X HEIGHT QTY
PHH0804	PANEL	8	X 4 1
X3094	4' CEILING ANGLE		4 2
BP005	PANEL BOLT PKG.		2 2

**WELD SIDE PANEL TO KNEE BRACE BEFORE SHIPPING**

**2 X 1 10 GA. OVER CAR**

**MESH STORAGE LOCKERS SPECIFICATIONS**

- WIRE MESH:** 2 x 1 No. 10 gauge woven wire mesh welded to angle and channel frame
- SLIDING DOORS:** 1 & 6 GA. U-EDGE frames with 2 x 1 mesh welded to frame. Padlock lugs welded to frames.
- SIDE PANELS:** 1 1/2 x 1 1/2 x 1/8 angle frames with 2 x 1 mesh welded to frame.
- TOP PANEL:** 1 1/2 x 1 1/2 x 1/8 angle frames with 2 x 1 mesh welded to frame.
- BOTTOM PANEL:** 1 1/2 x 1 1/2 x 1/8 angle frames with 2 x 1 mesh welded to frame.
- BACK PANEL:** 1 1/2 x 1 1/2 x 1/8 angle frames with 2 x 1 mesh welded to frame.
- CORNERS:** 1 1/2 x 1 1/2 x 1/8 angle, punched to match panels
- DOOR LOCKS:** Equipped for padlock. -Lock not included.
- HARDWARE:** All interconnecting hardware is furnished in zinc plated finish, well and floor anchors optional.
- FINISH:** One shop coat of water based PM9640 light grey enamel paint. Galvanized and plated parts are shipped as is. THE PAINT FINISH SPECIFIED IS FOR INTERIOR USE ONLY. MATERIAL MUST BE STORED INSIDE IN A DRY WELL VENTILATED AREA. DO NOT STORE OUTSIDE EXPOSED TO THE ELEMENTS.



**WARNINGS:**

- Check the piece count with the freight bill of lading.
- Check all shipping labels to confirm they are addressed to you.
- Note of errors on bill of lading before you sign ( shortages, damage, etc.)
- Sign for every piece of equipment. Do not sign for multiple pieces of equipment unless you are the recipient and you are the recipient of the replacement cost and freight charges will be charged to deliver the merchandise to you site.
- Proper freight claims must be filed with us within 10 days of receiving order.

**REVISIONS**

REV #	BY	DESCRIPTION	DATE
A	JP	UPDATED PARTS LIST	02/08/17

**NOTE:** SHIP DATE WILL NOT BE ASSIGNED NOR ANY MANUFACTURE DATE. ALL DIMENSIONS ARE TO FACE UNLESS OTHERWISE SPECIFIED. (1) FIELD VERIFIED SIGNER SHOP DRAWINGS. (2) CHANGE ORDER OR P.O. COVERING ANY PRICE MODIFICATION.



**JESCO INDUSTRIES INC.**  
 WIRE & IRON PRODUCTS  
 950 ANDERSON ROAD  
 LITCHFIELD, IL 49752  
 JESCO P#1 1.517.545.2863  
 WESCO P#1 1.517.545.2801



**BUY AMERICAN!**

**4' X 4' X 8' OVER THE CAR STORAGE LOCKER**

DATE: \_\_\_\_\_

ARCHITECT APPROVAL: \_\_\_\_\_

DATE: \_\_\_\_\_

INSTALLER: \_\_\_\_\_

DATE: \_\_\_\_\_

384170