

SIZE AND QUANTITY REQUIRED			
ITEM #	DESCRIPTION	WIDTH	X HEIGHT QTY
P8HR0604	PANEL	6	X 4 1
P8HR0604	SIDE PANEL	4	X 4 2
X3076	3" X 4" DOOR ASSY		
X3079	6" DOOR TRACK ASSY BOTTOM		
X3080	6" DOOR TRACK ASSY TOP		
X3085	4" KNEE BRACE ASSY - LH		
X3086	4" KNEE BRACE ASSY - RH		
X3089	4" FRONT CORNER ANGLE - LH		
X3090	4" FRONT CORNER ANGLE - RH		
X3092	4" CENTER BRACE ASSY		
BP005	PANEL BOLT PKG.		10

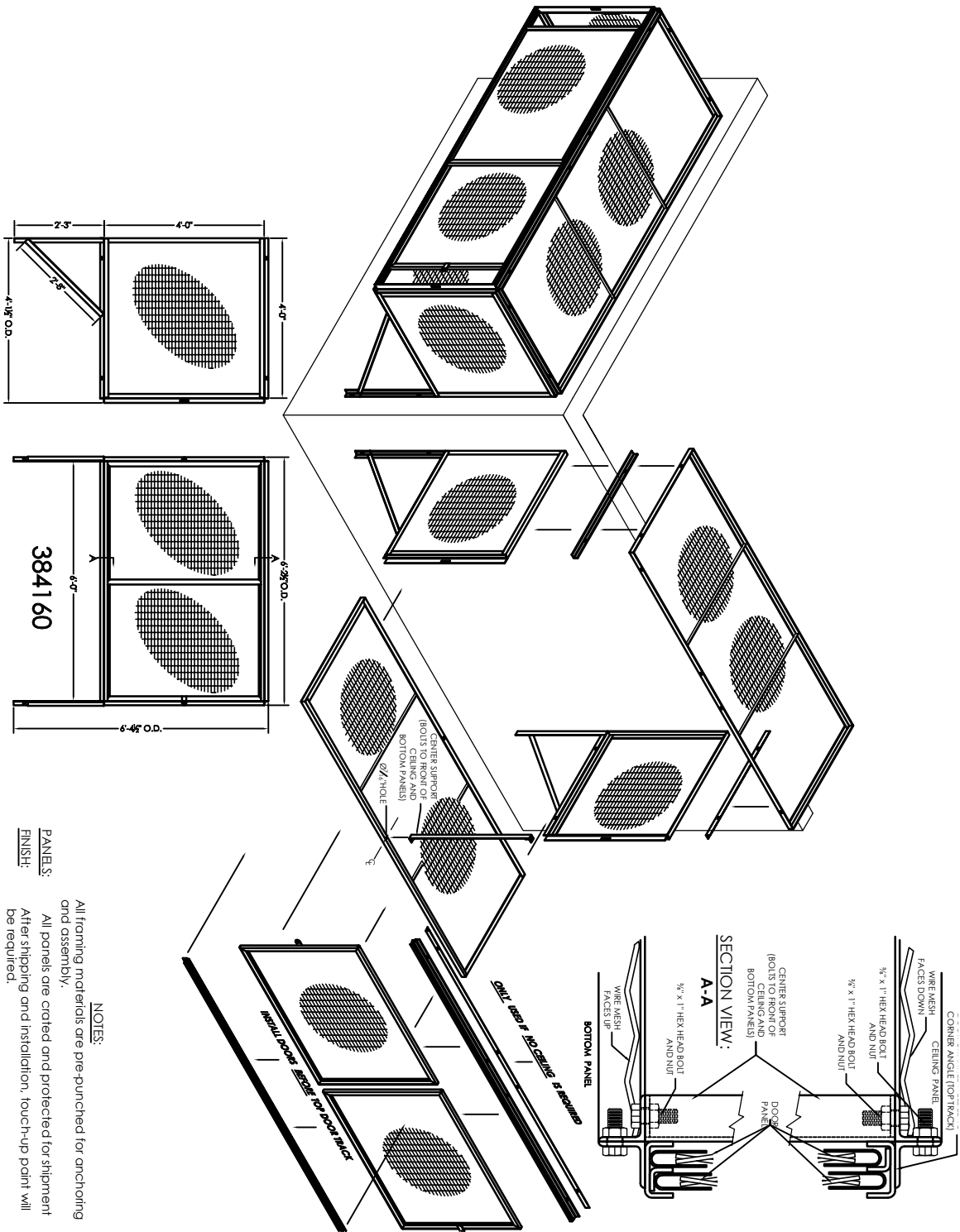
384210 CEILING OPTION

SIZE AND QUANTITY REQUIRED			
ITEM #	DESCRIPTION	WIDTH	X HEIGHT QTY
P8HR0604	PANEL	6	X 4 1
X3094	4" CEILING ANGLE		2
BP005	PANEL BOLT PKG.		6

2 X 1 10 GA. OVER CAR

MESH STORAGE LOCKERS SPECIFICATIONS

- WIRE MESH:** 2 x 1 No. 10 gauge woven wire mesh welded to angle and channel frame
- SLIDING DOORS:** 16 GA. U-EDGE frames with 2 x 1 mesh welded to frame. Padlock lugs welded to frames.
- SIDE PANELS:** 1 1/2" x 1 1/2" x 1/2" angle frames with 2 x 1 mesh welded to frame.
- TOP PANEL:** 1 1/2" x 1 1/2" x 1/2" angle frames with 2 x 1 mesh welded to frame.
- BOTTOM PANEL:** 1 1/2" x 1 1/2" x 1/2" angle frames with 2 x 1 mesh welded to frame.
- CORNERS:** 1 1/2" x 1 1/2" x 1/2" angle, punched to match panels
- DOOR LOCKS:** Equipped for padlock. Lock not included.
- HARDWARE:** All interconnecting hardware is furnished in zinc plated finish, wall and floor anchors optional.
- FINISH:** One shop coat of water based PA9017 dark gray enamel paint. Galvanized and plated parts are shipped as is. THE PAINT FINISH SPECIFIED IS FOR INTERIOR USE ONLY. MATERIAL MUST BE STORED INSIDE IN A DRY WELL VENTILATED AREA. DO NOT STORE OUTSIDE EXPOSED TO THE ELEMENTS.



NOTES:
 All forming materials are pre-punched for anchoring and assembly.
 All panels are coated and protected for shipment after shipping and installation, touch-up paint will be required.

REVISIONS	
REV #	DESCRIPTION
A	UPONED PARTS LIST
B	UPONED PARTS LIST

REV #	DATE	BY	DESCRIPTION
A	06/08/12		
B	02/27/15		

NOTE:
 SHOP DATE WILL NOT BE ASSIGNED NOR ANY
 MATERIALS OR PARTS HAVE BEEN DESIGNATED
 AS "FIELD VERIFIED SIGNER SHOP DRAWINGS."
 (1) FIELD VERIFIED SIGNER SHOP DRAWINGS
 (2) CHANGE ORDER OR P.O. COVERING ANY
 FIELD MODIFICATION.



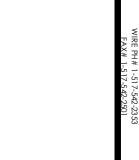
JESCO
 JESCO INDUSTRIES INC.
 WIRE & IRON PRODUCTS
 950 ANDERSON ROAD
 LITCHFIELD, IL 49522
 JESCO PH# 1.517.545.2863
 FAX# 1.517.545.2801



BUY AMERICAN!

REVISIONS

NOTE:



JESCO
 JESCO INDUSTRIES INC.
 WIRE & IRON PRODUCTS
 950 ANDERSON ROAD
 LITCHFIELD, IL 49522
 JESCO PH# 1.517.545.2863
 FAX# 1.517.545.2801