

SIZE AND QUANTITY REQUIRED				
ITEM #	DESCRIPTION	WIDTH	X HEIGHT	QTY
PBH0603	PANEL	6	X 3	1
PBH0304	SIDE PANEL	3	X 4	2
X3076	3' X 4' DOOR ASSY			2
X3079	6' DOOR TRACK ASSY BOTTOM			1
X3080	6' DOOR TRACK ASSY TOP			1
X3083	3' KNEE BRACE ASSY - LH			1
X3084	3' KNEE BRACE ASSY - RH			1
X3089	4' FRONT CORNER ANGLE - LH			1
X3090	4' FRONT CORNER ANGLE - RH			1
X3092	4' CENTER BRACE ASSY			1
BP005	PANEL BOLT PKG.			3
BP075	BOLT PKG. FOR STORAGE LOCKER SIDES			3

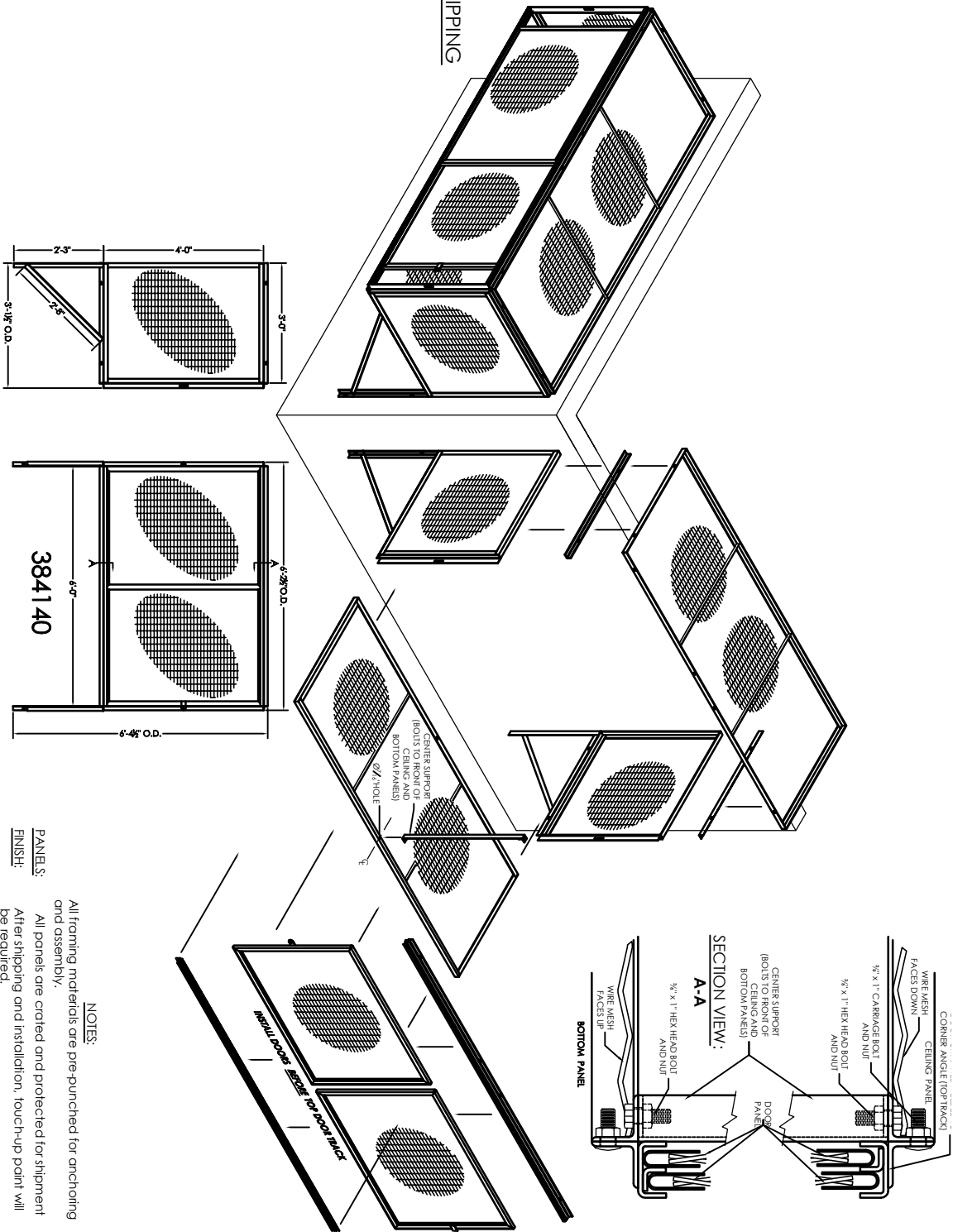
*384190 CEILING OPTION*				
ITEM #	DESCRIPTION	WIDTH	X HEIGHT	QTY
PBH0603	PANEL	6	X 3	1
X3093	3' CEILING ANGLE			2
BP005	PANEL BOLT PKG.			2

### WELD SIDE PANEL TO KNEE BRACE BEFORE SHIPPING

### 2 X 1 10 GA. OVER CAR

### MESH STORAGE LOCKERS SPECIFICATIONS

- WIRE MESH:** 2 x 1 No. 10 gauge woven wire mesh welded to angle and channel frame
- SLIDING DOORS:** 1.6 GA. U-EDGE frames with 2 x 1 mesh welded to frame. Padlock lugs welded to frames.
- SIDE PANELS:** 1 1/2 x 1 1/2 x 1/2 angle frames with 2 x 1 mesh welded to frame.
- TOP PANEL:** 1 1/2 x 1 1/2 x 1/2 angle frames with 2 x 1 mesh welded to frame.
- BOTTOM PANEL:** 1 1/2 x 1 1/2 x 1/2 angle frames with 2 x 1 mesh welded to frame.
- BACK PANEL:** 1 1/2 x 1 1/2 x 1/2 angle frames with 2 x 1 mesh welded to frame.
- CORNERS:** 1 1/2 x 1 1/2 x 1/2 angle, punched to match panels
- DOOR LOCKS:** Equipped for padlock. -Lock not included.
- HARDWARE:** All interconnecting hardware is furnished in zinc plated finish, well and floor anchors optional.
- FINISH:** One shop coat of water based PM9 640 light grey enamel paint. Galvanized and plated parts are shipped as is. THE PAINT FINISH SPECIFIED IS FOR INTERIOR USE ONLY. MATERIAL MUST BE STORED INSIDE IN A DRY WELL VENTILATED AREA. DO NOT STORE OUTSIDE EXPOSED TO THE ELEMENTS.



- NOTES:** All forming materials are pre-punched for anchoring and assembly. All panels are coated and protected for shipment. After shipping and installation, touch-up paint will be required.

### REVISIONS

REV #	BY	DESCRIPTION	DATE
A	JP	UPDATED PARTS LIST	02/08/17

### NOTE

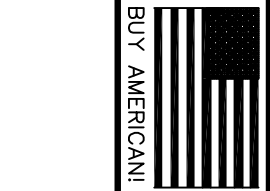
- SHIP DATE WILL NOT BE ASSIGNED NOR ANY MANUFACTURING SCHEDULES HAVE BEEN DECEMBER 15, 2017.
- (1) FIELD VERIFIED SIGNER SHOP DRAWINGS.
- (2) CHANGE ORDER OR P.O. COVERING ANY PRICE MODIFICATION.

### FINISH:

PANELS:

### 3' X 4' X 6' OVER THE CAR STORAGE LOCKER

DATE	BY	384140



**BEFORE YOU LEAVE YOUR OFFICE:**

- Check the piece count with the freight bill of lading.
- Check all shipping labels to confirm they are addressed to you.
- Note of errors on bill of lading before you sign ( shortages, damage, etc.)
- Sign for every piece of equipment and every piece of material on the bill of lading. Wellmark is not responsible for missing or damaged goods if you do not sign for every piece of equipment and every piece of material on the bill of lading. Wellmark is not responsible for missing or damaged goods if you do not sign for every piece of equipment and every piece of material on the bill of lading. Freight charges will be charged to deliver the merchandise to your site.
- Proper freight claims must be filed with us within 10 days of receiving order.

REV #	BY	DESCRIPTION	DATE
A	JP	UPDATED PARTS LIST	02/08/17

**NOTE**  
SHIP DATE WILL NOT BE ASSIGNED NOR ANY MANUFACTURING SCHEDULES HAVE BEEN DECEMBER 15, 2017.  
(1) FIELD VERIFIED SIGNER SHOP DRAWINGS.  
(2) CHANGE ORDER OR P.O. COVERING ANY PRICE MODIFICATION.



DATE	BY	384140